

CERAMIC LINER

TECHNOLOGY MANUFACTURER PRODUCTS





A High Quality Fine Ceramic Liner Having High Abrasion Resistance

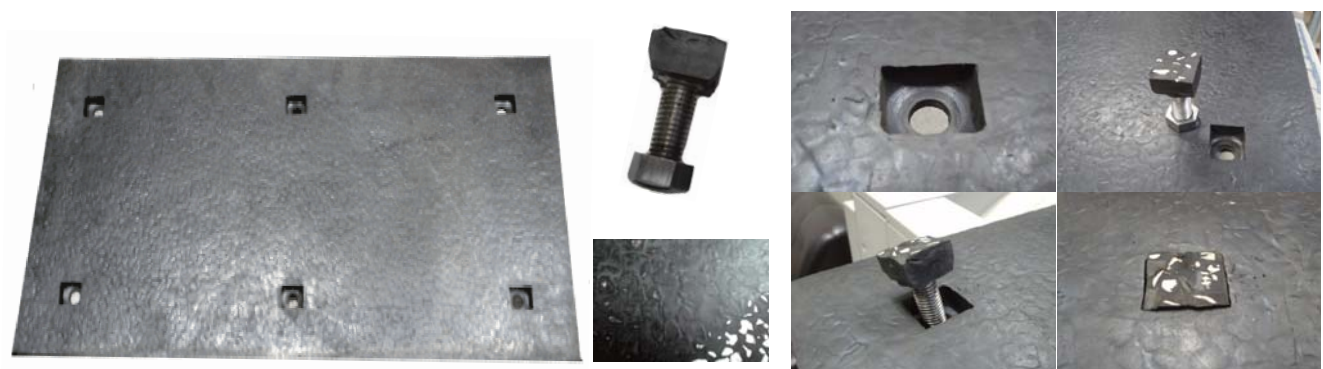


A liner, which was developed by our engineers 25 years ago, is still widely used. However, the liner has various disadvantages. Now, we provide a new liner that overcomes the disadvantages based on the new technology. The new ceramic liner can be provided to a customer at a low price because it is made from a defective product from a ceramic factory.

Easy to Install on Site



By installing the liner with ceramic particles on a truck bed of a large dump truck, which is operated in a mine, etc., you can absorb noise and impact and reduce damage to the truck bed. The liner is also easily replaceable.



If you want to fix a rubber sheet with ceramic particles to a shoot and the like, bolts can be used as shown in the above photos. You can also cut off the liner easily on site.



<http://www.worldtmp.com>

TMP

TECHNOLOGY MANUFACTURER PRODUCTS

CERAMIC LINER



Installation Examples of a Liner for Improving Abrasion Resistance



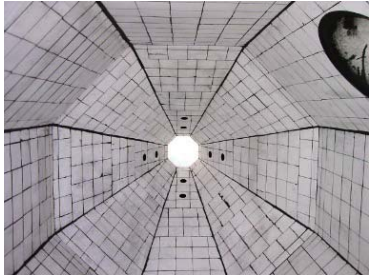
Blower liner



Elbow



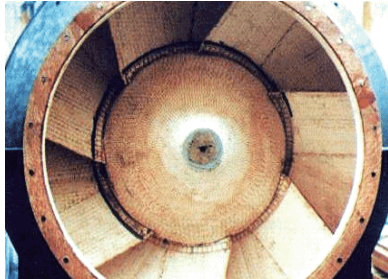
Screw



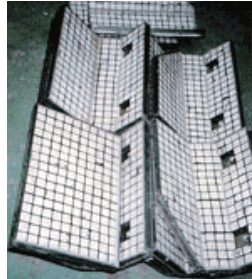
Hopper



Blower



Blower liner



Shoot



Hopper

It is our specialties to install a liner to a product that needs long time durability, such as a component of an industrial machine, in accordance with a customer's request. Our liner can be used for a long time due to our fine installation skills.

Inexpensive and Long Lasting TMP Ceramic Liner for a Shoot



- Abrasion of a shoot has been a major problem.
 By installing our high quality ceramic liner, you can increase the abrasion resistance by several times as compared with conventional liners.
 You can accomplish a durable and effective lining by investigating a route of a transported object and installing the liner adequately around the area of high abrasion.

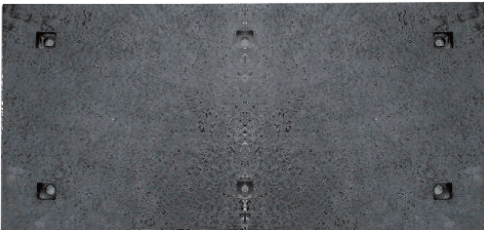


<http://www.worldtmp.com>

TMP

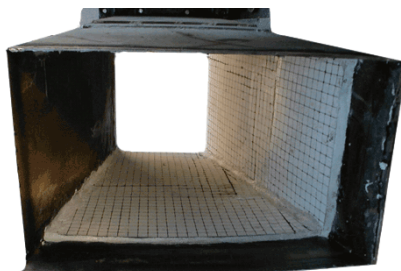
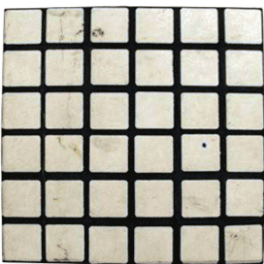
CERAMIC LINER

A Sheet with Ceramic Particles



The sheet with ceramic particles can be processed in various shapes. You can cut off the sheet easily on site and fix the sheet with adhesive or bolts depending on its use.

Various Sizes of Ceramic Tips



A ceramic liner has been the essential part for equipment on which the ceramic liner can exert beneficial effects such as a shoot, an inner surface of a dust collector, and a hopper. To install the liner, a certain amount of the adhesive skill is required.

We can provide the most suitable adhesive depending on its use.

A Row of Ceramic Sheets on a Rubber Sheet (a Belt Cleaner for a Conveyor Belt)



A belt conveyor and skirt plate

