

COATING GLASS

TECHNOLOGY MANUFACTURER PRODUCTS



TMP

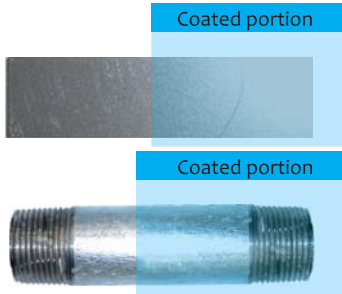
Technology Manufacturer Products

TMP COATING GLASS

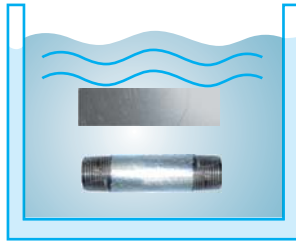


Super Hard Glass Coating

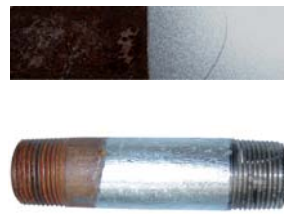
Coated portion



Soak the half-coated steel in undiluted hydrochloric acid for a week



The steel after a week in undiluted hydrochloric acid



Inside of the steel



A Description on above photos

A half-coated steel was soaked in undiluted hydrochloric acid for a week. The uncoated portion was rusted in a while, whereas the coated portion showed no change at all. The TMP coating glass is a new material that forms a hard coat at ambient temperature. The coat has hardness of 9H, which is quite hard and it can be used in various applications.

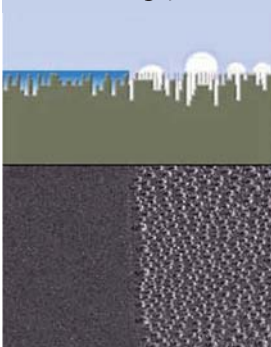
Glass-coated Steel in Undiluted Hydrochloric Acid

Glass-coated steel was oxidized and smoked in undiluted hydrochloric acid; however, the coated portion showed no change at all.

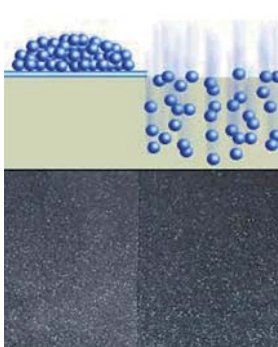


A Mechanism of Glass Coating

Fills invisible gaps



Blocks water vapor



As shown in the illustration at left, the TMP coating glass fills invisible gaps so that it can prevent penetration. As shown in the illustration at right, the TMP coating glass blocks very small objects such as water vapor. It provides a new degree of protection.

The TMP coating glass can be applied easily with a brush, sprayer, or roller.



<http://www.worldtmp.com>

TMP



Glass Coating

A steel structure such as a bridge has to be maintained every year and repainted regularly to protect it from corrosion or rust. There are many other sites that have a problem with corrosion and rust, such as a chemical factory, pickling facility, desulfurization equipment, and ship. Usually, the repaint work is expensive in cost for other than the painting work. By coating the TMP coating glass, you can also reduce the repaint cycle. The TMP coating glass can block acid and alkali solution and protect from corrosion or rust for a long time by forming a thin and hard coat.

Features of the TMP Coating Glass

- 1 It is mineral, resistant to external factors such as ultraviolet and acid rain, and maintains protection for a long time.
- 2 It has adhesion, water resistance, and salt resistance.
- 3 It is liquid and reacts with moisture from the air and hardened to 9H once it is coated.
- 4 It does not include an organic solvent.
- 5 It is stabled chemically and physiologically and inactive.

The TMP coating glass is a general-purpose coating material and can be used as a normal paint in construction work. It can form an enamel coat on various materials such as concrete, mortar, metal, and resin at ambient temperature. The coat has weather, heat, and contamination resistances that are particular to minerals. (The special primer is required depending on the coated target.)



<http://www.worldtmp.com>

TMP



Applications of the TMP Coating Glass

Coated target	Coating effects
Iron	Weather, corrosion, acid, abrasion, and contamination resistances and electrical insulation
Aluminum	Weather, acid, contamination, and scratch resistances and electrical insulation
Stainless	Weather, corrosion, high temperature, acid, contamination, and scratch resistances
Painted surface	Weather, contamination, and mildew resistances and spill protection of endocrine disturbing chemicals
Concrete, mortar	Weather, mildew, and acid resistances and water repellency
Wood	Water, moisture, insect, contamination, and scratch resistances and hardening
Tile	Water, moisture, contamination, and scratch resistances
Fiber	Water, moisture, and insect resistances
Resin	Contamination resistance, spill protection of endocrine disturbing chemicals, and hard coat
Refractory material	Heat resistance and molten metal mold releasability

Usage Examples of the TMP Coating Glass

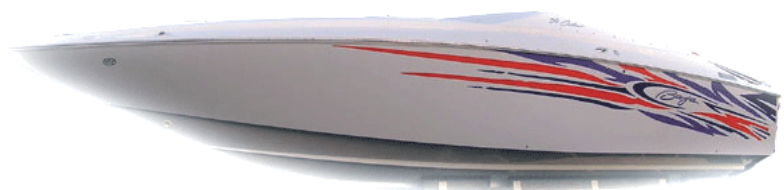


The TMP coating glass can be used in various applications such as play equipment in an amusement park such as a Ferris wheel, rafting, and rails of a roller coaster, posts in a golf range, etc



The TMP coating glass can protect boats and ships from moss, mold, etc.

A glass coating has been used in various applications, such as play equipment in an amusement park, leisure boat, cruise ship and can be applied easily with a brush, roller, sprayer, etc.



<http://www.worldtmp.com>

TMP